

COUNCIL CENTREFOLD 301/301H HENDERSON

55kg

70kg

Wood

Interior

For centre folding wooden partition doors weighing up to 55kg and 70kg

Overview

Council Centrefold offers a high quality top hung system designed for centre folding wooden partition doors. Folding units of up to seven full doors and one half door can be hinged to the post. When using floating units, configurations must consist of five, seven or nine full doors and have a minimum clearance of 2mm between them.

Catering for doors up to 55kg and 70kg, Council Centrefold offers the opportunity to house access doors in the form of a swing door or a wicket door contained within one of the doors. It is essential that all doors are of equal width. It is also worth noting that door leaves should be constructed to provide secure fixing for hanger, hinges and guides and can be flush, panelled or glazed.

Features and Benefits

- Caters for doors weighing up to 55kg and 70kg
- Suitable for residential and light commercial folding partitions
- Doors are hung centrally
- Doors can fold to one or both sides of the opening
- To cover any width of opening, any number of folding units can be used



Product and Door Specification

| Product | Max. Door Width | Max. Door Height | Door Thickness Range | Max. Door Weight |
|-------------------------|-----------------|------------------|----------------------|------------------|
| Council Centrefold 301 | 1000mm | 3300mm | 44 - 57mm | 55kg |
| Council Centrefold 301H | 1000mm | 3600mm | 44 - 57mm | 70kg |

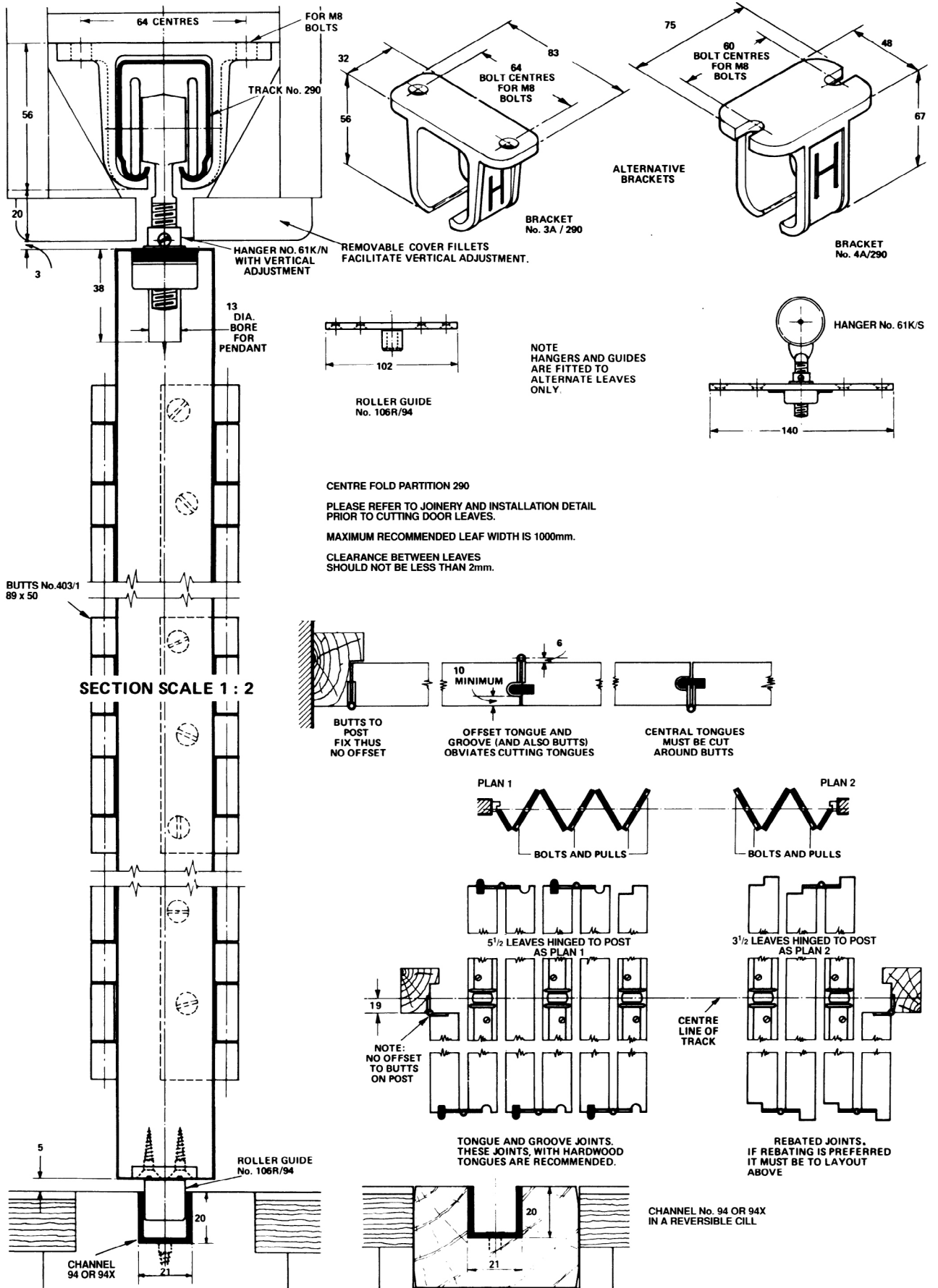
Component Specification

| Component | Description | Short Code | |
|--|--|------------|-----------|
| | | 301 | 301H |
| Track (Equal to opening width) | Galvanised steel track in 2000, 2500, 3000, 4000, 5000 and 6000mm lengths | 301/**** | 301H/**** |
| Brackets Fix every 900mm max and at track joints. Fix extra bracket where doors stack | Sofft fixed bracket | 3A/301 | |
| Hanger (1 every 2 panels) | Centre folding hanger, steel wheels | 61A/S | |
| | Centre folding hanger, nylon wheels | 61A/N | |
| Hinges 3 in height, increase to 4 for doors over 3000mm high | Butt hinge | 403/2 | |
| Guides 1 every 2 panels | Centre folding guide | 106R/94 | |
| Guide Channel | Brass guide channel available in 1500 and 3000mm lengths | 94/**** | |
| | Aluminium guide channel in 1500, 2000, 2500, 3000, 4000 and 6000mm lengths | 94X/**** | |

**** Replace by length of track for full short code

Accessories

| | | |
|----------|--|--|
| 400 | Flush Pull - Satin Anodised Aluminium | |
| 400SS | Flush Pull - Stainless Steel | |
| 333 | Flush Bolt - Satin Anodised Aluminium | |
| FB110S | Flush Bolt - Non Locking | |
| FANTOM/S | Fantom Magnetic Door Stop - Satin (Also available in clear, black, white and polished brass) | |



For further information, please contact us on:

UK Sales

T: +44 (0) 191 377 7345

E: sales@pchenderson.com

W: www.pchenderson.com

Export Sales

T: +44 (0) 191 377 7346

E: international@pchenderson.com

W: export.pchenderson.com